

THE AUTOMATOR

CAMPTEK SOFTWARE'S MONTHLY NEWSLETTER

December 2021

CAMP
TEK

Vol. 17



What does RPA Mean to You? One of CampTek Software's missions is to provide valuable, tactical direction, to help decision makers better understand the Automation landscape. [Our RPA Software as a Service](#) is designed for businesses looking for large-scale Automations. We also cater to smaller businesses and the individual with our [Citizen Developer packages](#). We've highlighted our offerings in [blogs](#) and [data sheets](#) over the course of 2021 and as much as they may differ, the resounding theme of them all is: **Automation is for everyone and anyone can experience it!** Everyone's jobs can be made easier. Anyone's life can be enhanced with RPA. Joy can be brought back to the workplace by eliminating mundane tasks with automation. Peace can be restored in your work environments by putting robots in charge of the minutiae. In this issue, our Founder & CTO Peter Camp explains how [RPA is more accessible than ever before](#). As we wrap up 2021 in tidy packages, consider giving yourself, your employees and your business the gift of RPA in 2022.

– Stefanie Bromberg, Marketing & Outreach Manager

CONTENT

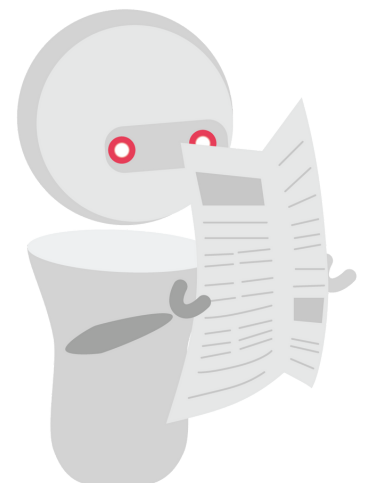
Attended v. Unattended Automations: Explained pg. 2

We're Growing! – pg. 3

Blog: The Importance of Making RPA Accessible – pg. 4

RPA Tip of the Month – pg. 5

Find us on Social Media – pg. 5





Attended v. Unattended Automations Explained

by Gretchen Hyslip

"Where does RPA Software live on my computer?" Our team gets this question often. It's a good question because in our day-to-day we think of downloading software as a change in our computers' functions. For example, downloading the latest Apple software to your phone or laptop is going to change the way your phone operates. However, RPA Software is different.

Let's break it down into two categories: Attended Automations and Unattended Automations.

Attended Automations

Think of an attended automation as your little computer buddy. Much like that paperclip popping up when you opened Microsoft Office. RPA Software will be downloaded to your computer at the appropriate time when you are ready to import your bot automation (or to learn how to build a bot if you are enrolled in our [Citizen Development program](#)). At that time, you will need to give your new software access to any portals or logins that you are using the bot for. Let's say you want a bot to open your emails and download files to save in a folder. You will have to give that bot access to your email. Your bot will not have access to anything you don't give it access to. Its interactions with your computer/applications will not affect your day-to-day, in fact you may not even notice it's running until you get a report!

An attended automation gives you more freedom to oversee your bot. You can control its movements right from your computer. To learn more about attended automations, check out our [Citizen Developer demo!](#)

Unattended Automations

An unattended automation lives on a virtual machine. This type of automation is sent to your computer when needed to complete the desired task and heads home after work. This type of automation will still need access to any portals or logins that you are using the bot for. This bot will still do all of the things the attended bot will. The only difference is that it lives in a virtual machine and only visits your computer when told to do so by the automation. Let's say every 15 minutes you need to have a bid board updated. Great!

Continued on page 3

That will be programmed in by the developer you're working with, and that bot will come by your computer every 15 minutes to update your bid boards. Again, as with the attended bot, its interactions with your computer/applications will not affect your day-to-day. Check out our demo "[Physician Letter Assistant \(To Relieve Physician Burnout\)](#)" to learn more!

Bots simulate human process functions. We call this a mapping. Given the task you want to automate, you will be asked to map out your process. How do you log in? What do you click on? How do you get from point A to point B? Then the robot will be mapped in exactly that way to copy the human map. The robot won't be able to click through anything outside of its written script.

We hope this helps you to understand a little more about how RPA Software works and where it lives. As always, should you have any questions please reach out to us or check out our eBooks to learn more!



RPA SaaS Provider

We're Growing!

**Learn more about our Openings and Internships
at www.campteksoftware.com/careers**



The Importance of Making RPA Accessible

by Peter Camp

RPA has been around in some form since modern-day computing has become prevalent. Through its history, it has struggled to be something “everyone” can use. The technology is highly configurable and can make even the most seasoned developer cross eyed for some of its most complex tasks. Some colleagues and industry vets will recall a time (not that long ago) where it took quite a bit of coding and finesse to make a complex script/workflow/automation work. The tools to learn, build and deploy a running bot were not fully formed.

Jump ahead to 2022, we are in a completely different paradigm. Any RPA Solution Provider can say with close to 100% confidence, whatever workflow in need of automation can be automated. The crazy part is that for half of the use cases there is no need for a full-on RPA Developer. The concept of Citizen Development has been talked about for years, but only recently have there been successful outcomes from it. I recently attended the UiPath Forward IV conference and sat in a session focused on the public sector. One of the participants worked at the DoD and he said something that really stuck with me. He indicated that Citizen Development is the best process discovery engine there is. It makes complete sense. If we give subject matter experts the ability to automate something, they will get several benefits immediately.

1. Start looking at ways they can automate their day to day.
2. Collaborate with other team members to leverage automations they have created.
3. Discover use cases that are too complex to build as part of the Citizen Development program and push those to the internal or external Center of Excellence.
4. Most importantly, become change agents within the Organization to prototype automations that can have wide reaching effects.

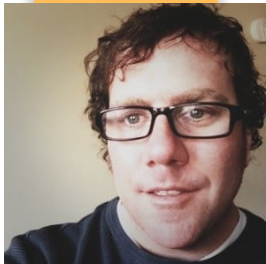
This all sounds great, but what are the barriers? Accessing the toolset utilized by the internal/external COE and the Citizen Development team itself. At CampTek Software we are huge advocates of the UiPath platform and feel it's the best platform, making RPA available for all members of an organization and potentially the masses. The UiPath StudioX is a product like no other. It is strictly built for the business user, and it becomes even more powerful with the use of Custom Libraries built by the traditional COE. What is so exciting about this product is that a business user can build a reliable bot without not knowing how to code at all. The activities are so robust that all of the configuration I spoke of earlier is removed. With proper guidance from a program similar to like our Citizen Development as a Service, a team or an individual can start building powerful bots quickly. This rapid time to production and the ease in which it can be done will expand the adoption of RPA and make the technology more ubiquitous.

RPA Tip of the Month!

Welcome to our series, *RPA Tip of the Month*! In this segment, members of the CampTek Team provide tips to help guide you along your automation journey.



This month's tip is brought to you by **Founder & CTO, Peter Camp**. Peter offers some critical thinking steps when beginning your automation journey.



"When thinking about whether to automate any process one must consider two things. One, is the task is of high value and two, is the process mature enough. It's important to remember that not every process is worth automating. I often say to both existing and potential RPA Partners, if a workflow isn't properly defined, it's not worth automating. Another automation non-starter is a constantly changing application. Unfortunately, many automation initiatives fail because proper vetting of the bots isn't completed or is done without proper review. It's important to set proper governance around all RPA processes. It will help determine who in your organization will develop the automation. I'm a strong advocate of having the Citizen Developer be a part of the process discovery engine. This can help properly vet workflows and help determine the effectiveness and scale of the bot or bots being created.



Find us on Social Media!

Follow us on [Facebook](#), [LinkedIn](#) and [Twitter](#) to keep up with the latest in RPA news!

